



По вопросам продаж и поддержки обращайтесь:

Алматы (7273)495-231	Казань (843)206-01-48	Новокузнецк (3843)20-46-81	Смоленск (4812)29-41-54
Архангельск (8182)63-90-72	Калининград (4012)72-03-81	Новосибирск (383)227-86-73	Сочи (862)225-72-31
Астрахань (8512)99-46-04	Калуга (4842)92-23-67	Омск (3812)21-46-40	Ставрополь (8652)20-65-13
Барнаул (3852)73-04-60	Кемерово (3842)65-04-62	Орел (4862)44-53-42	Сургут (3462)77-98-35
Белгород (4722)40-23-64	Киров (8332)68-02-04	Оренбург (3532)37-68-04	Тверь (4822)63-31-35
Брянск (4832)59-03-52	Краснодар (861)203-40-90	Пенза (8412)22-31-16	Томск (3822)98-41-53
Владивосток (423)249-28-31	Красноярск (391)204-63-61	Пермь (342)205-81-47	Тула (4872)74-02-29
Волгоград (844)278-03-48	Курск (4712)77-13-04	Ростов-на-Дону (863)308-18-15	Тюмень (3452)66-21-18
Вологда (8172)26-41-59	Липецк (4742)52-20-81	Рязань (4912)46-61-64	Ульяновск (8422)24-23-59
Воронеж (473)204-51-73	Магнитогорск (3519)55-03-13	Самара (846)206-03-16	Уфа (347)229-48-12
Екатеринбург (343)384-55-89	Москва (495)268-04-70	Санкт-Петербург (812)309-46-40	Хабаровск (4212)92-98-04
Иваново (4932)77-34-06	Мурманск (8152)59-64-93	Саратов (845)249-38-78	Челябинск (351)202-03-61
Ижевск (3412)26-03-58	Набережные Челны (8552)20-53-41	Севастополь (8692)22-31-93	Череповец (8202)49-02-64
Иркутск (395)279-98-46	Нижний Новгород (831)429-08-12	Симферополь (3652)67-13-56	Ярославль (4852)69-52-93
Россия (495)268-04-70	Киргизия (996)312-96-26-47	Казахстан (7172)727-132	



REPLACE EATON
INTERNORMEN

Replace Eaton / Internormen Filter Element

SINFT manufactures all types of Replace Eaton/Internormen Filter Element according to your cross reference, just give us your cross reference part number and quantity you need, we will give you an instant quote.

- . High resistance to variable operating pressures
- . Filters contain more pleats and surface area than most competitors
- . Consistent filter efficiency, even at high differential pressure
- . Longer filter element life with original quality
- . Customized solutions with competitive cost
- . Technical engineering and laboratory support



Replacement Eaton /Internormen filter elements provide trouble-free operation for a wide range of demanding applications.

Real Eaton/Internormen Filter Replacement Manufacturer

SINFT replace filter elements for Eaton / Internormen mainly consist of Eaton Internormen hydraulic filter elements, Eaton water filter cartridges, and Eaton filter bags. With over 27500 part numbers, you can find any Eaton / Internormen filter elements here in SINFT with a competitive price.

SINFT can guarantee all replacement Eaton / Internormen filter elements from us are totally exchangeable with genuine Eaton Internormen in dimensions and function, so you can easily fit it into your existing Eaton / Internormen filter housings and vessels.

Whether for particles generated during your system assembly or operation, SINFT is a reliable and ideal supplier to effectively remove the contamination and protecting contaminant-sensitive components such as servo and proportional valves.

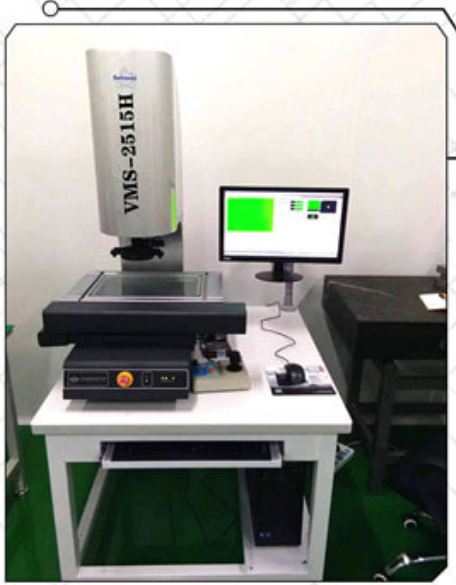


- . Cross Reference For Internormen Hydraulic Filter Element
- . Eaton Metal Filter Cartridge Replacement
- . Eaton Filter Bag Replacement
- . Eaton Filter Bag Basket
- . Eaton Filter Bag



1. Eaton/Internormen Hydraulic Filter Element Cross Reference

With SINFT complete alternative Internormen filter elements database, there are more than 27500 part number of high-quality filter elements with same original quality but we can save you more than 40% Internormen filter element purchase cost.



Because SINFT has its own technical engineering and laboratory support

SINFT wide range of Eaton/Internormen filter element replacement is designed to help you achieve oil cleanliness level requests when filtering hydraulic fluids, cooling lubricants or water-based fluids, The production process is strictly implemented in accordance with the ISO 9001/2015, M.D CE.

These Internormen replace filter elements are offered with various filter materials, different construction types and micron ratings to protect your critical hydraulic system components and meet you any industrial applications.

Replace for Eaton 01.E pressure filter elements
Replace for Eaton 01.nr return line filter element
Available Filter Materials:

1. Glass fiber (3-25 microns)
2. Stainless steel wire mesh (10-200 microns)
3. Paper (10-80 microns)

Technical data:

- Filtration accuracy: 3µm ~ 200µm
- Working pressure: 10bar-210bar
- Working temperature: -30°C~+100°C
- Sealing material: nitrile, viton, others on request
- End design: single or double open end, bypass valve with opening pressure options

Applications:

- Power generation
- Agriculture and construction
- General Industrial
- Wind
- Mining
- Automotive
- Oil and gas

2. Eaton Metal Filter Cartridge Replacement

SINFT replacement Eaton metal filter cartridges are available with various filter materials and micron ratings for varied applications, especially corrosive liquids and gases, high temperature liquids and gases, high pressures and backwash self-cleaning filtration.

Replace Eaton metal filter cartridges use porous titanium or stainless steel 316L porous metal powder. Its filtration accuracy can reach 0.5micron with a rugged and fixed pore structure. At present, SINFT can offer BECO PROTECT KM with multiple end configurations and gasket/o-rings to fit your present filter housings.

Technical data:

- Outer Diameter: 2.36", 2.48", 2.5"
- Max. working temperature: 392 °F (200 °C)
- Material: Titanium and stainless steel 316
- Filtration efficiency: 0.5, 1, 5, 10, 15, 35, 50, 100µm @ 99.5%
- Length: 5", 9.75", 10", 20", 30", 40"
- O-rings: Silicone, Buna-N, EPDM, FPM, PTFE
- Adapter codes: DOE, 226/222 Flat single open end, 3/4"/1" Male NPT threads

3. Eaton Filter Bag Replacement

SINFT Replace Eaton filter bag is a surface filtration way to capture particles which are larger than the respective pore size. It is economical and convenient to replace with your existing

Eaton bag filter housings.

Eaton filter bags, such as sentinel filter bags, snap ring filter bags can achieve efficiencies greater than 99%. Using SINFT replacement Eaton filter bags, you can easily reduce bags change-out frequency and minimize maintenance and downtime.

Features:

- Simple and easy filter bags change-out
- No additives such as resins, binders or surface treatments
- Low differential pressure for less energy consumption of pumps
- Large filtration service area and long using time
- Remove particles ranging from 1 – 1000µm

Applications:

- Beverage filtration
- Fine particle removal in parts cleaning
- Chemicals
- Inks
- Paint and coating
- Process water
- Hydraulic oils and lubricants

4. Eaton Filter Bag Bseket Replacement

SINFT manufactures a complete line of Bag Filter Basket Strainer, Filter Bag Baskets Perforated tube, and Filter Housings which replace all current models as well as any which have been discontinued by the Original Equipment Manufacturers (O.E.M.).

Replace #1 Size Stainless Steel 1/16" Perforated Restrainer Basket

Replace #2 Size Stainless Steel 1/16" Perforated Restrainer Basket

Replace #3 Size Stainless Steel Perforated Restrainer Basket

Replace #4 Size Stainless Steel Perforated Restrainer Basket

Please check our Replace Eaton or Internormen hydraulic filter part number as below:

01.E 30.3VG.30.E.P/01.E 170.3VG.30.E.P/01.E 600.3VG.30.E.P/01.E 30.3VG.HR.E.P

01.E 170.3VG.HR.E.P/01.E 600.3VG.HR.E.P/01.E 30.6VG.30.E.P/01.E 170.6VG.30.E.P

01.E 600.6VG.30.E.P/01.E 30.6VG.HR.E.P/01.E 170.6VG.HR.E.P/01.E 600.6VG.HR.E.P

01.E 30.10G.30.E.P/01.E 170.10G.30.E.P/01.E 600.10G.30.E.P/01.E 30.10VG.30.E.P

01.E 170.10G.HR.E.P/01.E 600.10G.HR.E.P/01.E 30.10VG.HR.E.P/01.E 170.10VG.30.E.P

01.E 600.10VG.30.E.P/01.E 30.16VG.30.E.P/01.E 170.10VG.HR.E.P/01.E 600.10VG.HR.E.P

01.E 30.16VG.HR.E.P/01.E 170.16VG.30.E.P/01.E 600.16VG.30.E.P/01.E 30.25G.30.E.P

01.E 170.16VG.HR.E.P/01.E 600.16VG.HR.E.P/01.E.30.25G.HR.E.P/01.E 170.25G.30.E.P
01.E 600.25G.30.E.P/01.E 30.25VG.30.E.P/01.E 170.25G.HR.E.P/01.E 600.25G.HR.E.P
01.E 30.25VG.HR.E.P/01.E 170.25VG.30.E.P/01.E 600.25VG.30.E.P/01.E 30.40G.30.E.P
01.E 170.25VG.HR.E.P/01.E 600.25VG.HR.E.P/01.E.30.40G.HR.E.P/01.E 170.40G.30.E.P
01.E.600.40G.HR.E.P/01.E 30.80G.30.E.P/01.E.170.40G.HR.E.P/01.E 600.80G.30.E.P
01.E.30.80G.HR.E.P/01.E 170.80G.30.E.P/01.E 600.130G.30.E.P/01.E 30.130G.30.E.P
01.E.170.80G.HR.E.P/01.E 900.3VG.30.E.P/01.E.30.130G.HR.E.P/01.E.170.130G.HR.E.P
01.E 900.3VG.HR.E.P/01.E 60.3VG.30.E.P/01.E 240.3VG.30.E.P/01.E 900.6VG.30.E.P
01.E 60.3VG.HR.E.P/01.E 240.3VG.HR.E.P/01.E 900.6VG.HR.E.P/01.E 60.6VG.30.E.P
01.E 240.6VG.30.E.P/01.E 900.10G.30.E.P/01.E 60.6VG.HR.E.P/01.E 240.6VG.HR.E.P
01.E 900.10G.HR.E.P/01.E 60.10G.30.E.P/01.E 240.10G.30.E.P/01.E 900.10VG.30.E.P
01.E 60.10G.HR.E.P/01.E 240.10G.HR.E.P/01.E 900.10VG.HR.E.P/01.E 60.10VG.30.E.P
01.E 240.10VG.30.E.P/01.E 900.16VG.30.E.P/01.E 60.10VG.HR.E.P/01.E 240.10VG.HR.E.P
01.E 900.16VG.HR.E.P/01.E 60.16VG.30.E.P/01.E 240.16VG.30.E.P/01.E 900.25G.30.E.P
01.E 60.16VG.HR.E.P/01.E 240.16VG.HR.E.P/01.E 900.25G.HR.E.P/01.E 60.25G.30.E.P
01.E 240.25G.30.E.P/01.E 900.25VG.30.E.P/01.E 60.25G.HR.E.P/01.E 240.25G.HR.E.P
01.E 900.25VG.HR.E.P/01.E 60.25VG.30.E.P/01.E 240.25VG.30.E.P/01.E 900.40G.30.E.P
01.E 60.25VG.HR.E.P/01.E 240.25VG.HR.E.P/01.E.900.40G.HR.E.P/01.E 60.40G.30.E.P
01.E 240.40G.30.E.P/01.E.900.80G.HR.E.P/01.E.60.40G.HR.E.P/01.E.240.40G.HR.E.P
01.E 900.130G.30.E.P/01.E 60.80G.30.E.P/01.E 240.80G.30.E.P/01.E.900.130G.HR.E.P
01.E.60.80G.HR.E.P/01.E.240.80G.HR.E.P/01.E 1350.3VG.30.E.P/01.E 60.130G.30.E.P
01.E 240.130G.30.E.P/01.E 1350.3VG.HR.E.P/01.E.60.130G.HR.E.P/01.E.240.130G.HR.E.P
01.E 1350.6VG.30.E.P/01.E 90.3VG.30.E.P/01.E 360.3VG.30.E.P/01.E 1350.6VG.HR.E.P
01.E 90.3VG.HR.E.P/01.E 360.3VG.HR.E.P/01.E 1350.10VG.30.E.P/01.E 90.6VG.30.E.P
01.E 360.6VG.30.E.P/01.E 1350.10VG.HR.E.P/01.E 90.6VG.HR.E.P/01.E 360.6VG.HR.E.P
01.E 1350.16VG.HR.E.P/01.E 90.10G.30.E.P/01.E 360.10G.30.E.P/01.E 1350.25VG.30.E.P
01.E 90.10G.HR.E.P/01.E 360.10G.HR.E.P/01.E 90.10VG.30.E.P/01.E 360.10VG.30.E.P

01.E 90.10VG.HR.E.P/01.E 360.10VG.HR.E.P/01.E 90.16VG.30.E.P/01.E 360.16VG.30.E.P
01.E 90.16VG.HR.E.P/01.E 360.16VG.HR.E.P/01.E 90.25G.30.E.P/01.E 360.25G.30.E.P
01.E 90.25G.HR.E.P/01.E 360.25G.HR.E.P/01.E 90.25VG.30.E.P/01.E 360.25VG.30.E.P
01.E 90.25VG.HR.E.P/01.E 360.25VG.HR.E.P/01.E 90.40G.30.E.P/01.E 360.40G.30.E.P
01.E.90.40G.HR.E.P/01.E.360.40G.HR.E.P/01.E 90.80G.30.E.P/01.E 360.80G.30.E.P
01.E.90.80G.HR.E.P/01.E 360.130G.30.E.P/01.E 90.130G.30.E.P/01.E.360.130G.HR.E.P
01.E 150.3VG.30.E.P/01.E 450.3VG.30.E.P/01.E 150.3VG.HR.E.P/01.E 450.3VG.HR.E.P
01.E 150.6VG.30.E.P/01.E 450.6VG.30.E.P/01.E 150.6VG.HR.E.P/01.E 450.6VG.HR.E.P
01.E 150.10G.30.E.P/01.E 450.10G.30.E.P/01.E 150.10G.HR.E.P/01.E 450.10G.HR.E.P
01.E 150.10VG.30.E.P/01.E 450.10VG.30.E.P/01.E 150.10VG.HR.E.P/01.E 450.10VG.HR.E.P
01.E 150.16VG.30.E.P/01.E 450.16VG.30.E.P/01.E 150.16VG.HR.E.P/01.E 450.16VG.HR.E.P
01.E 150.25G.30.E.P/01.E 450.25G.30.E.P/01.E 150.25G.HR.E.P/01.E 450.25G.HR.E.P
01.E 150.25VG.30.E.P/01.E 450.25VG.30.E.P/01.E 150.25VG.HR.E.P/01.E 450.25VG.HR.E.P
01.E 150.40G.30.E.P/01.E 450.40G.30.E.P/01.E.150.40G.HR.E.P/01.E.450.40G.HR.E.P
01.E 150.80G.30.E.P/01.E 450.80G.30.E.P/01.E.150.80G.HR.E.P/01.E.450.80G.HR.E.P
01.E.150.130G.30.E.P/01.E.450.130G.30.E.P/01.NL.40.3VG.HR.E.P/01.NL.40.25.30.E.P
01.NL.63.12VG.16.E.P/01.NL.63.6VG.HR.E.P/01.NL.250.3VG.HR.E.P/01.NL.250.25VG.10.E.P
01.NL.400.3VG.HR.E.P/01.NL.400.12VG.16.E.P/01.NL.630.12VG.16.E.P
/01.NL.630.25VG.10.E.P
01.NL.1000.3VG.HR.E.P/01.NL.1000.25VG.10.E.P/01.NR.40.3VG.HR.B.P
/01.NR.40.25VG.10.B.P
01.NR.100.3VG.HR.B.P/01.NR.100.25VG.10.B.P/01.NR.160.6VG.HR.B.P
/01.NR.160.25VG.10.B.P
01.NR.250.12VG.16.B.P/01.NR.250.6VG.HR.B.P/01.NR.400.3VG.HR.B.P
/01.NR.400.25VG.10.B.P
01.NR.1000.12VG.16.B.P/01.NR.1000.6VG.HR.B.P.....

->

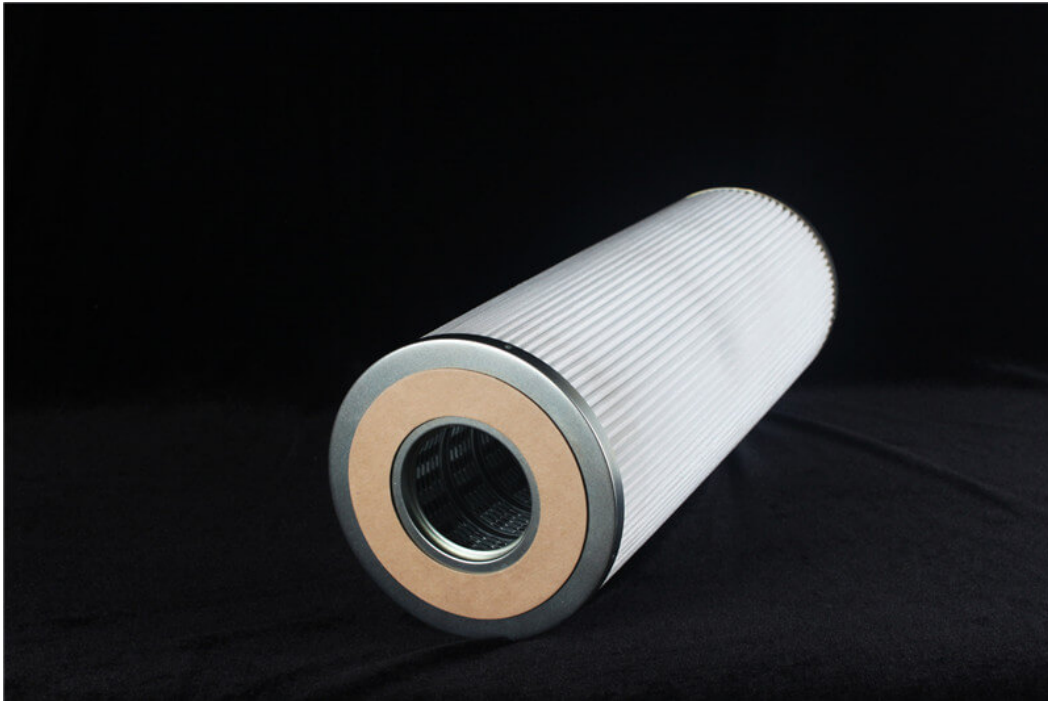
REPLACE HILCO-HILLIARD FILTER CARTRIDGES

Replace Hilco-Hilliard Hydraulic Filter Cartridges

SINFT®. designs, manufactures and markets a complete line of Filter and Strainer Replacement Elements which are functionally and dimensionally interchangeable with industrial Hilliard Hydraulic Filter manufacturer elements.

The reliability and efficiency of any filtration system is chiefly dependent on the quality of the cartridges used in it. HILCO has a full line of filter cartridges for virtually every application depending on size, filtration efficiencies and dirt-holding capacity. Most fluids can be restored to a like-new condition. Cross Reference HILCO on-site testing facility is continuously examining and improving cartridge performance as customer's needs evolve.





SINFT® Cross Reference HILCO Series:

PH Synthetic Pleated Filters

AT Activated Alumina Cartridges

DS Saflow Disc Filters

DD Saflow D Disc Filters

HP High Pressure Synthetic Filters

HT Hilite™ Fullers' Earth Cartridges

PD Hilsorb Cartridges

PL Pleated Paper Filter

ST Selexorb Filter Cartridges

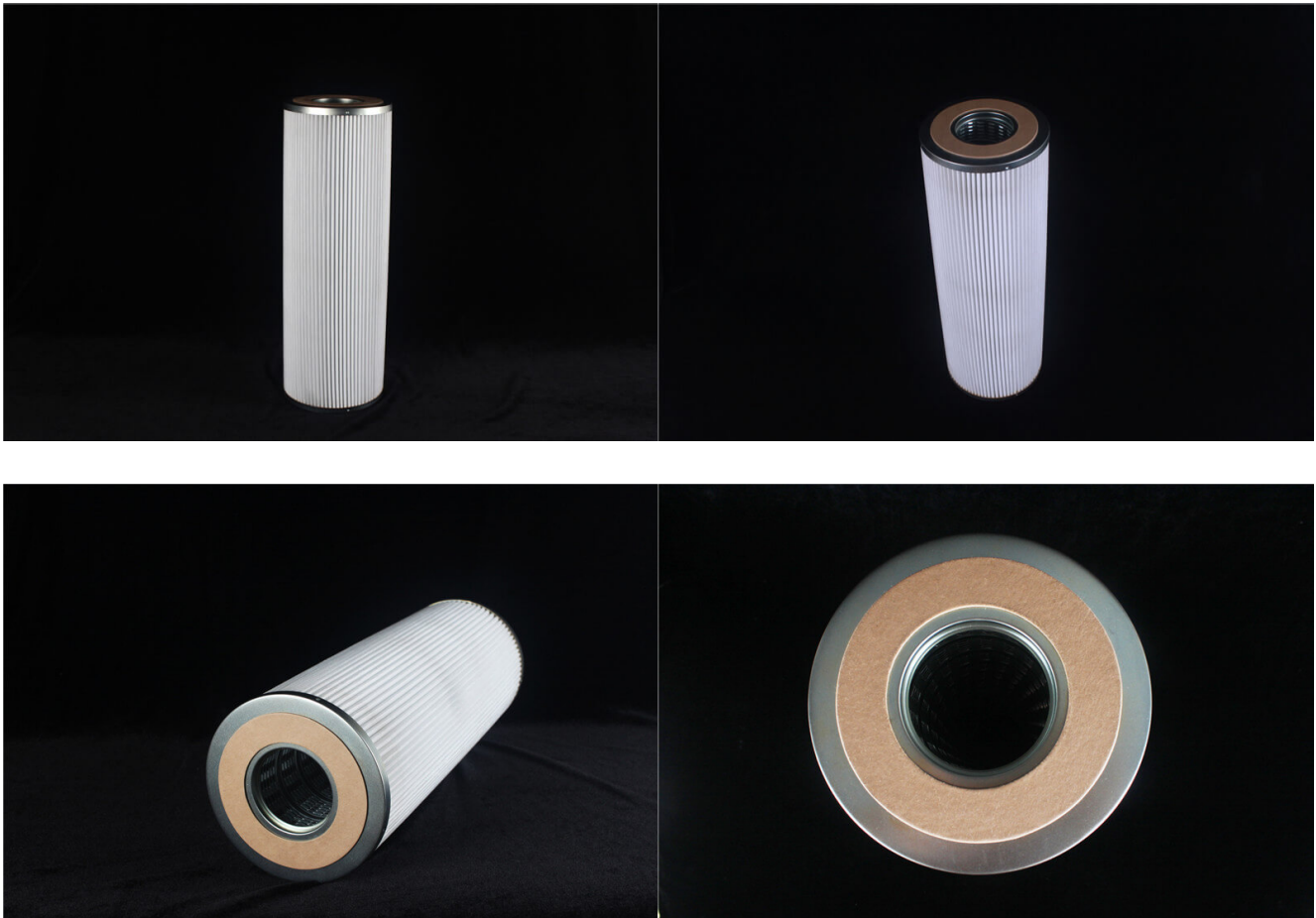
* All tradenames referenced are the trademarks, service marks or registered trademarks of their respective holders. Hebei Sinft Filter Co., Ltd. does not claim to produce other manufacturer's filters and/or strainer elements.

->

REPLACE HILCO-HILLIARD FILTER CARTRIDGES

Pleated Synthetic Filter Cartridges – Replace PH Series Filter Element

These durable cartridges stand up to continued use without softening and deterioration as a result of exposure to water. The key is an advanced synthetic media that provides maximum filtration with minimum pressure drop.



SINFT® Cross Reference HILCO PH Series:

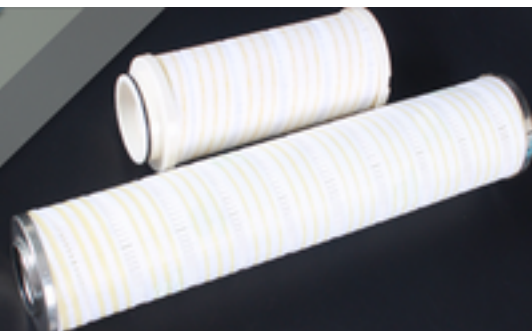
PH 718-05-CN
PH 718-10-CN
PH 718-11-CN
PH 718-12-CN

PH 718-14-CN
PH 718-16-CN
PH 718-20-CN
PH 718-03-CN
PH 718-01-CN
PH 310-12-C

* All tradenames referenced are the trademarks, service marks or registered trademarks of their respective holders. Hebei Sinft Filter Co., Ltd. does not claim to produce other manufacturer's filters and/or strainer elements.

->

REPLACEMENT PALL HYDRAULIC FILTER



SINFT Cross Reference PALL

SINFT® has rich experience in manufacturing all types of Replacement Pall Hydraulic Filter. We provide you competitive price and can totally replace your present Pall filter elements in sizes and function. We have a professional production and engineer teams that will handle all your Pall filter elements requests, such as Replacement Pall hydraulic filter elements, Pall water filter cartridges, Pall high flow filter cartridges, Pall hydraulic oil filters, and other Pall filter assembly.

- .Has 4600 Pall Filter Element Cross Reference Part Number
- .Over 17 Years of OEM experience for major filter brand manufacturers
- .Replacement Pall filter element can directly fit in dimension and function
- .SINFT® offers tailored-made service for special Pall filter elements
- .MD. CE certification & ISO 9001 filter element manufacturer



Pall Filter Element Replacement Manufacturer

Pall oil filters are available in a wide range of materials to handle any flow rate, which allows you to economically achieve wanted cleanliness level for the oil system. Pall water filter cartridge has double open-ended (DOE) and single open-ended (SOE) choices, with and without core support configurations to fit your present Pall filter housing.

Compare to other replacement filter elements suppliers, SINFT® focuses on to provide you reliable and consistent filtration performance to maintain contaminants at low levels, therefore, choosing SINFT® replacement filter elements, you don't need to replace elements frequently and cost much on hydraulic system failures and maintenance.

Pall Hydraulic Filter Element Replacement
 Pall Water Filter Cartridge Replacement
 Pall Coalescer Filter Element Replacement
 Pall Oil Filter Element Replacement
 Pall Ultipleat High Flow Filter Cartridge Replacement
 Pall HC9600 Filter Element Replacement
 Pall UE Series Replacement

SINFT®: Your Best Pall Filter Element Replacement Factory

SINFT® Filter is an independent industrial filter manufacturer. Pall name and part number are used for cross reference only. SINFT® Filters does not claim to provide Pall filter elements or other manufacturer's filter and/or strainer elements.

SINFT Cross Reference PALL Part Number

HC9400FDN13H	HC9400FKS39H	HC9404FKN26H	HC9600FDP16H	HC9600FKS16H	HC9600FUS16H	HC9651FUT16Z
HC9400FDN13Z	HC9400FKS39Z	HC9404FKN26Z	HC9600FDP16Z	HC9600FKS16Z	HC9600FUS16Z	HC9651FUT8H
HC9400FDN26H	HC9400FKT13H	HC9404FKN39H	HC9600FDP4H	HC9600FKS4H	HC9600FUS4H	HC9651FUT8Z
HC9400FDN26Z	HC9400FKT13Z	HC9404FKN39Z	HC9600FDP4Z	HC9600FKS4Z	HC9600FUS4Z	HC9700FDN18H
HC9400FDN39H	HC9400FKT26H	HC9404FKP13H	HC9600FDP8H	HC9600FKS8H	HC9600FUS8H	HC9700FDN18Z
HC9400FDN39Z	HC9400FKT26Z	HC9404FKP13Z	HC9600FDP8Z	HC9600FKS8Z	HC9600FUS8Z	HC9700FDN27H
HC9400FDP13H	HC9400FKT39H	HC9404FKP26H	HC9600FDS13H	HC9600FKT13H	HC9600FUT13H	HC9700FDN27Z
HC9400FDP13Z	HC9400FKT39Z	HC9404FKP26Z	HC9600FDS13Z	HC9600FKT13Z	HC9600FUT13Z	HC9700FDN9H
HC9400FDP26H	HC9400FKZ13H	HC9404FKP39H	HC9600FDS16H	HC9600FKT16H	HC9600FUT16H	HC9700FDN9Z
HC9400FDP26Z	HC9400FKZ13Z	HC9404FKP39Z	HC9600FDS16Z	HC9600FKT16Z	HC9600FUT16Z	HC9700FDP18H
HC9400FDP39H	HC9400FKZ26H	HC9404FKS13H	HC9600FDS4H	HC9600FKT4H	HC9600FUT4H	HC9700FDP18Z
HC9400FDP39Z	HC9400FKZ26Z	HC9404FKS13Z	HC9600FDS4Z	HC9600FKT4Z	HC9600FUT4Z	HC9700FDP27H
HC9400FDS13H	HC9400FKZ39H	HC9404FKS26H	HC9600FDS8H	HC9600FKT8H	HC9600FUT8H	HC9700FDP27Z
HC9400FDS13Z	HC9400FKZ39Z	HC9404FKS26Z	HC9600FDS8Z	HC9600FKT8Z	HC9600FUT8Z	HC9700FDP9H
HC9400FDS26H	HC9400FUN13H	HC9404FKS39H	HC9600FDT13H	HC9600FKZ13H	HC9601FDN13H	HC9700FDP9Z
HC9400FDS26Z	HC9400FUN13Z	HC9404FKS39Z	HC9600FDT13Z	HC9600FKZ13Z	HC9601FDN16H	HC9700FDS18H
HC9400FDS39H	HC9400FUN26H	HC9404FKT13H	HC9600FDT16H	HC9600FKZ16H	HC9601FDN4H	HC9700FDS18Z
HC9400FDS39Z	HC9400FUN26Z	HC9404FKT13Z	HC9600FDT16Z	HC9600FKZ16Z	HC9601FDN8H	HC9700FDS27H

HC9400FDT13H	HC9400FUN39H	HC9404FKT26H	HC9600FDT4H	HC9600FKZ4H	HC9601FDP13H	HC9700FDS27Z
HC9400FDT13Z	HC9400FUN39Z	HC9404FKT26Z	HC9600FDT4Z	HC9600FKZ4Z	HC9601FDP13Z	HC9700FDS9H
HC9400FDT26H	HC9400FUP13H	HC9404FKT39H	HC9600FDT8H	HC9600FKZ8H	HC9601FDP16H	HC9700FDS9Z
HC9400FDT26Z	HC9400FUP13Z	HC9404FKT39Z	HC9600FDT8Z	HC9600FKZ8Z	HC9601FDP16Z	HC9700FDT18H
HC9400FDT39H	HC9400FUP26H	HC9404FKZ13H	HC9600FKN13H	HC9600FUN13H	HC9601FDP4H	HC9700FDT18Z
HC9400FDT39Z	HC9400FUP26Z	HC9404FKZ13Z	HC9600FKN13Z	HC9600FUN13Z	HC9601FDP4Z	HC9700FDT27H
HC9400FKN13H	HC9400FUP39H	HC9404FKZ26H	HC9600FKN16H	HC9600FUN16H	HC9601FDP8H	HC9700FDT27Z
HC9400FKN13Z	HC9400FUP39Z	HC9404FKZ26Z	HC9600FKN16Z	HC9600FUN16Z	HC9601FDP8Z	HC9700FDT9H
HC9400FKN26H	HC9400FUS13H	HC9404FKZ39H	HC9600FKN4H	HC9600FUN4H	HC9601FDS13H	HC9700FDT9Z
HC9400FKN26Z	HC9400FUS13Z	HC9404FKZ39Z	HC9600FKN4Z	HC9600FUN4Z	HC9601FDS16H	HC9700FKN18H
HC9400FKN39H	HC9400FUS26H	HC9600EOJ8H	HC9600FKN8H	HC9600FUN8H	HC9601FDS4H	HC9700FKN18Z
HC9400FKN39Z	HC9400FUS26Z	HC9600EOT4H	HC9600FKN8Z	HC9600FUN8Z	HC9601FDS8H	HC9700FKN27H
HC9400FKP13H	HC9400FUS39H	HC9600FDN13H	HC9600FKP13H	HC9600FUP13H	HC9601FDT13H	HC9700FKN27Z
HC9400FKP13Z	HC9400FUS39Z	HC9600FDN13Z	HC9600FKP13Z	HC9600FUP13Z	HC9601FDT13Z	HC9700FKN9H
HC9400FKP26H	HC9400FUT13H	HC9600FDN16H	HC9600FKP16H	HC9600FUP16H	HC9601FDT16H	HC9700FKN9Z
HC9400FKP26Z	HC9400FUT13Z	HC9600FDN16Z	HC9600FKP16Z	HC9600FUP16Z	HC9601FDT16Z	HC9700FKP18H
HC9400FKP39H	HC9400FUT26H	HC9600FDN4H	HC9600FKP4H	HC9600FUP4H	HC9601FDT4H	HC9700FKP18Z
HC9400FKP39Z	HC9400FUT26Z	HC9600FDN4Z	HC9600FKP4Z	HC9600FUP4Z	HC9601FDT4Z	HC9700FKP27H
HC9400FKS13H	HC9400FUT39H	HC9600FDN8H	HC9600FKP8H	HC9600FUP8H	HC9601FDT8H	HC9700FKP27Z
HC9400FKS13Z	HC9400FUT39Z	HC9600FDN8Z	HC9600FKP8Z	HC9600FUP8Z	HC9601FDT8Z	HC9700FKP9H
HC9400FKS26H	HC9404FKN13H	HC9600FDP13H	HC9600FKS13H	HC9600FUS13H	HC9601FKN13H	HC9700FKP9Z
HC9400FKS26Z	HC9404FKN13Z	HC9600FDP13Z	HC9600FKS13Z	HC9600FUS13Z	HC9601FKN16H	HC9700FKS18H

->

Interchange Parker Filter Element



MP Filtri replacement hydraulic filter element

SINFT provide a wide selection of quality MP Filtri replacement hydraulic filter elements to protect the hydraulic circuit from contamination as per ISO 4406, CE. We manufacture all type of interchange MP Filtri hydraulic filter element based on different cross reference.

- .Reliable, consistent performance and resistance to tough operating environment.**
- .Longer element life for lower maintenance costs**
- .lightweight, low differential pressure, high strength**
- .Provide maximum protection by maintaining contaminants at low levels**
- .Simple to install and inexpensive to purchase**



MP Filtri Filter Element Replacement Manufacturer

SINFT replacement MP Filtri hydrau filter elements also name Replace MP Filtri elements, MP Filtri hydraulic filter elements or MP hydraulic filter elements.

It is made from glass fiber and stainless steel wire mesh or paper to remove particles and water in hydraulic and lubrication fluids.

SINFT MP Filtri replacement elements are designed to withstand system pressure up to 560 bar with micron rating from 3-200. These MP Filtri elements are ideal for protecting contaminant-sensitive components such as pumps and proportional valves. And usually, the maintenance

costs of these parts are many times than elements cost.

FC1018F003BS	FC1073M060BS	FC1095F005BS	FC1109N010BS	FC1240F010XS	FC1333F003BS	FC1363F003BS	FC5009F025BS
FC1018F005BS	FC1073M100BS	FC1095F010BS	FC1110F003BS	FC1240F025XS	FC1333F005BS	FC1363F005BS	FC5012A003BS
FC1018F010BS	FC1073N010BS	FC1095F025BS	FC1110F005BS	FC1240M060XS	FC1333F010BS	FC1363F010BS	FC5012A010BS
FC1018F025BS	FC1090F003BS	FC1095M060BS	FC1110F010BS	FC1240M100XS	FC1333F025BS	FC1363F025BS	FC5012F003BS
FC1018M060BS	FC1090F005BS	FC1095M100BS	FC1110F025BS	FC1260F025XS	FC1334F003BS	FC1364F003BS	FC5012F010BS
FC1018M100BS	FC1090F010BS	FC1095N010BS	FC1110M060BS	FC1275F025XS	FC1334F005BS	FC1364F005BS	FC5012F025BS
FC1018N010BS	FC1090F025BS	FC1096F003BS	FC1110M100BS	FC1290F003BS	FC1334F010BS	FC1364F010BS	FC5013A003BS
FC1051N010BS	FC1090M060BS	FC1096F005BS	FC1110N010BS	FC1290F005BS	FC1334F025BS	FC1364F025BS	FC5013A010BS
FC1051N010BS16	FC1090M100BS	FC1096F010BS	FC1111F003BS	FC1290F010BS	FC1341F003BS	FC1371F003BS	FC5013F003BS
FC1052N010BS	FC1090N010BS	FC1096F025BS	FC1111F005BS	FC1290F025BS	FC1341F005BS	FC1371F005BS	FC5013F010BS
FC1052N010BS16	FC1091F003BS	FC1096M060BS	FC1111F010BS	FC1290M060BS	FC1341F010BS	FC1371F010BS	FC5013F025BS
FC1055F010BS	FC1091F005BS	FC1096M100BS	FC1111F025BS	FC1290M100BS	FC1341F025BS	FC1371F025BS	FC5014A003BS
FC1055F025BS	FC1091F010BS	FC1096N010BS	FC1111M060BS	FC1290N010BS	FC1342F003BS	FC1372F003BS	FC5014A010BS
FC1056F010BS	FC1091F025BS	FC1097F003BS	FC1111M100BS	FC1297F003BS	FC1342F005BS	FC1372F005BS	FC5014F003BS
FC1056F025BS	FC1091M060BS	FC1097F005BS	FC1111N010BS	FC1297F005BS	FC1342F010BS	FC1372F010BS	FC5014F010BS
FC1070F003BS	FC1091M100BS	FC1097F010BS	FC1113F003BS	FC1297F010BS	FC1342F025BS	FC1372F025BS	FC5014F025BS
FC1070F005BS	FC1091N010BS	FC1097F025BS	FC1113F005BS	FC1297F025BS	FC1343F003BS	FC1373F003BS	FC5018A003BS
FC1070F010BS	FC1092F003BS	FC1097M060BS	FC1113F010BS	FC1297M060BS	FC1343F005BS	FC1373F005BS	FC5018A010BS
FC1070F025BS	FC1092F005BS	FC1097M100BS	FC1113F025BS	FC1297M100BS	FC1343F010BS	FC1373F010BS	FC5018F003BS
FC1070M060BS	FC1092F010BS	FC1097N010BS	FC1113M060BS	FC1297N010BS	FC1343F025BS	FC1373F025BS	FC5018F010BS
FC1070M100BS	FC1092F025BS	FC1098F003BS	FC1113M100BS	FC1301F003BS	FC1344F003BS	FC1391F003BS	FC5018F025BS
FC1070N010BS	FC1092M025NS NH3	FC1098F005BS	FC1113N010BS	FC1301F005BS	FC1344F005BS	FC1391F005BS	FC5031F010BS
FC1071F003BS	FC1092M060BS	FC1098F010BS	FC1114F003BS	FC1301F010BS	FC1344F010BS	FC1391F010BS	FC5031F025BS
FC1071F005BS	FC1092M100BS	FC1098F025BS	FC1114F005BS	FC1301F025BS	FC1344F025BS	FC1391F025BS	FC5032F010BS
FC1071F010BS	FC1092N010BS	FC1098M060BS	FC1114F010BS	FC1302F003BS	FC1352F003BS	FC1392F003BS	FC5032F025BS
FC1071F025BS	FC1093F003BS	FC1098M100BS	FC1114F025BS	FC1302F005BS	FC1352F005BS	FC1392F005BS	FC5033F010BS
FC1071M060BS	FC1093F005BS	FC1098N010BS	FC1114M060BS	FC1302F010BS	FC1352F010BS	FC1392F010BS	FC5033F025BS
FC1071M100BS	FC1093F010BS	FC1099F003BS	FC1114M100BS	FC1302F025BS	FC1352F025BS	FC1392F025BS	FC7001F010BK
FC1071N010BS	FC1093F025BS	FC1099F005BS	FC1114N010BS	FC1303F003BS	FC1353F003BS	FC1393F003BS	FC7002F010BK
FC1072F003BS	FC1093M060BS	FC1099F010BS	FC1115F003BS	FC1303F005BS	FC1353F005BS	FC1393F005BS	FC7002F025BK
FC1072F005BS	FC1093M100BS	FC1099F025BS	FC1115F005BS	FC1303F010BS	FC1353F010BS	FC1393F010BS	FC7003F010BK
FC1072F010BS	FC1093N010BS	FC1099M060BS	FC1115F010BS	FC1303F025BS	FC1353F025BS	FC1393F025BS	FC7005A003BS
FC1072F025BS	FC1094F003BS	FC1099M100BS	FC1115F025BS	FC1331F003BS	FC1361F003BS	FC1394F003BS	FC7005A010BS
FC1072M060BS	FC1094F005BS	FC1099N010BS	FC1115M060BS	FC1331F005BS	FC1361F005BS	FC1394F005BS	FC7005F003BK
FC1072M100BS	FC1094F010BS	FC1109F003BS	FC1115M100BS	FC1331F010BS	FC1361F010BS	FC1394F010BS	FC7005F005BK
FC1072N010BS	FC1094F025BS	FC1109F005BS	FC1115N010BS	FC1331F025BS	FC1361F025BS	FC1394F025BS	FC7005F010BK
FC1073F003BS	FC1094M060BS	FC1109F010BS	FC1130F012BS	FC1332F003BS	FC1362F003BS	FC5000F010BS	FC7005F025BK
FC1073F005BS	FC1094M100BS	FC1109F025BS	FC1131F010BS	FC1332F005BS	FC1362F005BS	FC5008F010BS	FC7006A003BS
FC1073F010BS	FC1094N010BS	FC1109M060BS	FC1131F025BS	FC1332F010BS	FC1362F010BS	FC5008F025BS	FC7006A010BS
FC1073F025BS	FC1095F003BS	FC1109M100BS	FC1131N010BS	FC1332F025BS	FC1362F025BS	FC5009F010BS	FC7006F003BK

->

Interchange Parker Filter Element



Interchange Parker filter

SINFT has a complete database of Replacement Parker filter elements, have 1870 a part number, at competitive prices and equivalent quality. We manufacture all type of interchange Parker hydraulic filter element based on different cross reference.

- .Capture greater amounts of contaminant for less downtime**
- .Fast delivery within 7 days for urgent order**
- .Totally replace Parker filter elements in sizes and function**
- .MD. CE certification & ISO 9001 filter element manufacturer**





Replacement Parker Hydraulic Filter Element

SINFT replacement Parker Hydraulic filter element products help keep hydraulic oil clean, which reduces contamination from normal wear and filters contaminants from new air, fluid, or components introduced into the system. Clean hydraulic fluid reduces contaminant buildup, reduces maintenance costs, and extends the working life of system components. In-line hydraulic filters can be installed in all typical hydraulic systems, such as those found in industrial, mobile, and agricultural settings. Off-line hydraulic filtration is used to filter hydraulic fluid in a hydraulic system when adding new fluid, charging fluid, or flushing the hydraulic system before adding new fluid. Hydraulic tank filtration components attach to tanks to keep fluid clean and free from debris, water, and air.

Filter element filtration precision, holding capacity, a pressure drop of clean filter element will all together influence replacement Parker filter elements final particle removal effect, service life, and your system downtime, So SINFT takes this very seriously.

SINFT replacement Parker hydraulic filter element is produced to be fully interchangeable with the original Parker Hannifin filter element with superior quality standard. It mainly includes Parker hydraulic filter elements, Parker oil filters, Parker air filter elements, and Racor fuel filter elements.

SINFT: Real Parker Filter Element Replacement Manufacturer

To improve replacement Parker filter elements quality and really achieve your system fluid cleanliness levels, SINFT has professional testing equipment and engineer teams to inspect Parker hydraulic oil filter replacement from integrity to bubble point data.

Points: integrity detection, bubbling experiments, strength testing, precision testing, high-pressure testing

At present, all SINFT replacement Parker filter elements conform to the latest ISO and CE standards in manufacture and testing, ensuring to offer you high efficiency and consistent filtration for applications, such as mining, construction, marine, forestry, agricultural, oil and gas, compressor and etc.

Common SINFT replacement Parker Filter Element models are listed as below:

924452Q	932624Q	933210Q	935534Q	927169Q	932650Q
924453Q	932625Q	933211Q	935535Q	927170Q	932651Q
925039Q	932626Q	933212Q	934311Q	927173Q	932652Q
925040Q	932627Q	933213Q	934472Q	927175Q	932653Q
926696Q	932628Q	933218Q	934473Q	927176Q	932654Q
926697Q	932629Q	933219Q	934474Q	927178Q	932655Q
926698Q	932630Q	933220Q	934475Q	927181Q	932656Q
926699Q	932631Q	933221Q	934477	927182Q	932657Q
926716Q	932632Q	933226Q	934478	927661Q	932658Q
926717Q	932633Q	933227Q	934479	927663Q	932659Q
926835Q	932634Q	933228Q	934566	927861Q	932660Q
926836Q	932635Q	933229Q	934567	928142Q	932661Q
926837Q	932636Q	933239Q	934568	928143Q	932662Q
926838Q	932637Q	933246Q	934569	928150Q	932663Q
926839Q	932638Q	933253Q	934570	928152Q	932664Q
926841Q	932639Q	933258Q	934571	928154Q	932665Q
926843Q	932640Q	933263Q	934572	928156Q	932666Q
926845Q	932641Q	933264Q	935139	928339Q	932667Q
926888Q	932642Q	933265Q	935140	928934Q	932668Q
926890Q	932643Q	933266Q	935141	928935Q	932669Q
926988Q	932644Q	933295Q	935142	928952Q	932670Q
926990Q	932645Q	933302Q	935143	928953Q	932674Q
926992Q	932646Q	933363Q	935144	929099Q	932675Q
926994Q	932647Q	933364Q	935145	929105Q	932676Q
926996Q	932648Q	933365Q	933204Q	929106Q	932677Q
926998Q	932649Q	933467Q	933205Q	929111Q	932678Q
933468Q	929884Q	932679Q	933788Q	931018Q	933089Q
933486Q	929885Q	932683Q	933800Q	931020Q	933090Q
933487Q	929886Q	932684Q	933802Q	931490Q	933091Q
933488Q	929890Q	932685Q	933804Q	932017Q	933092Q
933489Q	929891Q	932686Q	933806Q	932018Q	933116Q
933576Q	929892Q	932687Q	933808Q	932266Q	933117Q
933577Q	930099Q	932688Q	933809Q	932285Q	933118Q
933578Q	930100Q	932689Q	933810Q	932340Q	933119Q
933579Q	930118Q	932690Q	933811Q	932610Q	933135Q
933580Q	930119Q	932691Q	933812Q	932611Q	933136Q
933581Q	930162Q	932692Q	933814Q	932612Q	933152Q
933582Q	930164Q	932693Q	933816Q	932613Q	933153Q
933583Q	930189Q	932694Q	933818Q	932614Q	933155Q
933742Q	930190Q	932695Q	934121Q	932615Q	933156Q
933743Q	930191Q	932696Q	934122Q	932616Q	933193Q
933758Q	930192Q	932697Q	934123Q	932617Q	933194Q

933759Q	930193Q	932872Q	934124Q	932618Q
933763Q	930194Q	932873Q	934194Q	932619Q
933773Q	930197Q	932874Q	934200	932620Q
933774Q	930198Q	932875Q	934234	932621Q
933775Q	930367Q	933044Q	934236	932622Q
933776Q	930368Q	933045Q	934264Q	932623Q
933777Q	930369Q	933046Q	934265Q	933202Q
933782Q	930370Q	933047Q	934308Q	933203Q
933784Q	930438Q	933068Q	934309Q	933195Q
933786Q	930544Q	933069Q	934310Q	933196Q

->

Replace INDUFIL Filter Element

Elements for Indufil Filter Housings | Replacement

Indufil Filter Element

SINFT specializes in all types of Indufil cross reference to suit your present Indufil filter housings. It mainly Includes indufil hydraulic filter elements, pressure filter elements, SINFT® hold large stocks of replacement Indufil filter elements and an usually contact to you a inquiry within hours of receiving an. Find the Filtrec part number you need.

SINFT Cross Replace for Indufil Part Number

SINFT Part Number	Media	Indufil
SFT-ID-3525	Fibre	INR-S-120-HCC3-V
SFT-ID-3526	Fibre	MRS-S-200A-CC03-V
SFT-ID-3527	Fibre	INR-Z-400-CC25-V
SFT-ID-3528	Fibre	DDRZ900CC10V
SFT-ID-3529	Fibre	INR-Z-900-CC-10V
SFT-ID-3530	Fibre	INR-Z-200-CC25-V-SP
SFT-ID-3531	Fibre	INR-Z-200-CC25-V
SFT-ID-3532	Fibre	INR-Z-0095-API-PF025-V
SFT-ID-3533	Inox Stainless steel Edelstahl	INR-Z-0095-API-SS025-V
SFT-ID-3534	Fibre	INR-Z-0095-API-PF10
SFT-ID-3535	Fibre	INR-S-0095-API-PF025-V
SFT-ID-3536	Fibre	INR-S-0095-API-PF010
SFT-ID-3537	Fibre	INR-Z-0095-CC10-V
SFT-ID-3538	Fibre	INR-Z-0095-CC25-V
SFT-ID-3539	Inox Stainless steel Edelstahl	INR-S-220-API-SS25-V
SFT-ID-3540	Fibre	INR-Z-400-CC10-V
SFT-ID-3541	Fibre	INR-Z-400-CC10
SFT-ID-3542	Fibre	INR-S-0400-CC25-V
SFT-ID-3543	Fibre	INR-Z-0320-API-PF025-V

SFT-ID-3544	Fibre	INR-Z-0320-API-PF010-V
SFT-ID-3545	Fibre	INR-Z-320-CC10-V
SFT-ID-3546	Fibre	INR-S-0320-API-PF025-V
SFT-ID-3547	Fibre	INR-S-0320-CC10-V
SFT-ID-3548	Fibre	INR-S-0320-API-PF010-V
SFT-ID-3549	Fibre	INR-Z-460-CC25-V
SFT-ID-3550	Fibre	INR-Z-660-A-CC25-V
SFT-ID-3551	Fibre	INR-Z-880-CC25-V
SFT-ID-3552	Fibre	INR-Z-700-CC25V
SFT-ID-3553	Fibre	INR-S-700-CC10V
SFT-ID-3554	Fibre	INR-700-CC10
SFT-ID-3555	Fibre	INR-Z-700-CC10V
SFT-ID-3556	Fibre	INR-S-0700-API-PF010-V
SFT-ID-3557	Fibre	INR-Z-700-CC03
SFT-ID-3558	Fibre	INR-S-700-CC25-V
SFT-ID-3559	Fibre	INR-Z-700-CC05
SFT-ID-3560	Fibre	INR-Z-700-CC25
SFT-ID-3561	Fibre	INR-Z-620-A-CC10-V
SFT-ID-3562	Fibre	INR-Z-620-A-CC25-V
SFT-ID-3563	Fibre	INR-Z-610-A-CC10-V
SFT-ID-3564	Fibre	INR-Z-1800-A-CC10-V
SFT-ID-3565	Fibre	INR-Z-1800-A-CC25-V
SFT-ID-3566	Fibre	INR-S-1900-CC03-V
SFT-ID-3567	Fibre	INR-S-1800-A-CC25-V
SFT-ID-3568	Fibre	INR-S-1800-CC10-V
SFT-ID-3569	Fibre	INR-Z-400-CC250D

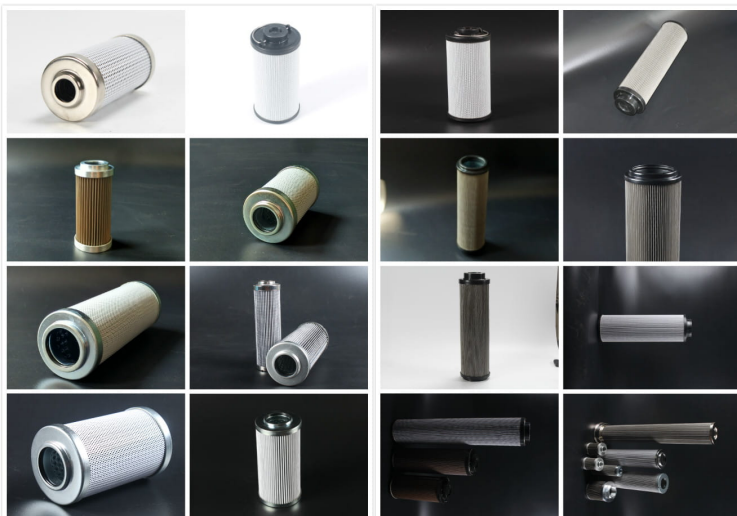
The combination of design concepts and materials used have a major influence on performance and the pressure drop of the filter unit maximising running time between change outs. Particle filtration down to 3 microns and efficiencies to 99.9% [$\beta_3 > 1000$]. Liquid removal down to 1 micron and efficiencies to 99.9% [$\beta_1 > 1000$].

SINFT can meet all of your needs for replacing Indufil filter elements. Buying a Switch Filtration replacement Indufil filter distributors means that you will be getting the highest quality and most value for your.

->

Replace Hydac Hydraulic Filter

SINFT® Produces the most complete models of Hydac filter elements that are totally exchangeable with Hydac original filter elements. It mainly includes Hydac hydraulic filter elements, pressure filter elements, coalescing filter elements, and hydraulic filter elements. function and installation as the respective original products.



Replace Hydac Hydraulic Filter Series:

A - Elements (hydac cross reference A - Elements)

AM - Aquamicon (hydac cross reference AM)

BDE - Cartridges (cross reference BDE)

Betterfit elements

D - Pressure elements

DH - Pressure elem. stainl. steel

DM - Dimicron

DN - Pressure elements DIN

FM - Flexmicron

L - Air filter elements

MA - Spin-On cartridges

MG - Spin-On cartridges

MU - Spin-On cartridges

MX - Elements for MFX

R - Return line elements

RK - Return line-suction elements

RN - Return line elements DIN

RS - Suction elements

S - Suction elements

Stat-Free elements

Filtrec Cross Reference Filter



Filtrec Cross Reference Filter

SINFT specializes in all types of filtrec cross reference to suit your present Filtrec filter housings. It mainly includes Filtrec hydraulic filter elements, pressure filter elements, coalescing filter elements, and hydraulic filter elements.function and installation as the respective original products.

SINFT Replacemnet Filter Element for Filtrec List

D112G03B	D811G03A	DMD0008F10B	R164G10B	XD100G10A
D125G10A	D841G10A	DMD0015B40B	R530G10	XD160T40A
D131G10A	DHD110B25B	DMD0015E10B	R631G10	
D142G06A	DHD110G10B	DMD0030B40B	R660G10B	
D143G06A	DHD160H10B	DMD0030E10B	RHK251M15B	
D151T60A	DHD240G20B	DMD0045B40B	RHK300G10B	
D261T60	DHD330G10B	DMD821B100B	RHR240G10B	
D614G25	DHD60H10B	DVD2225B25B	RHR850G10B-1	
D781G10B	DHD660G10B	R140G25B	RLR210E10B	
D790G10A	DLD240E10B	R140T25B	WG202	



Hydraulic Pilot Filter Element



Hydraulic pilot filter element fits inside the pilot filter housing which filters the hydraulic oil from the pump and sends it to the excavator manifold valve.

Parts can vary depending on your serial number.

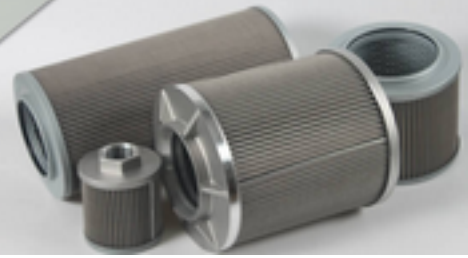


SINFT® Pilot filter is used to filter the impurities in the pilot oil of hydraulic system. The pilot oil controls the operation of each valve element and hydraulic system. The pilot system can use small flow to control large flow. And also when the driver stops pushing and pulling the control lever, the pilot valve will close. So as to cut off the oil circuit, It won't need return filter. They are sensitive components and can only see a small amount of traffic. It is easy to filter the entire system to the required level of cleanliness.

Originally designed to protect the pilots of pilot loaded regulators. However, their steel construction allows them to be used in any application up to 1,000 psig and come with a standard 5 micron element. Pilot Filters are available in 1/4" x 90° or 1/4" x 180° configurations, with NPT(F) connections.

->

Hydraulic Suction Filter Element



SUCTION FILTER ELEMENT

SINFT® designs, manufactures and markets a hydraulic oil suction filter, hydraulic suction filter element, hydraulic suction filter element which are functionally and dimensionally interchangeable with industrial OEM filter manufacturer elements.



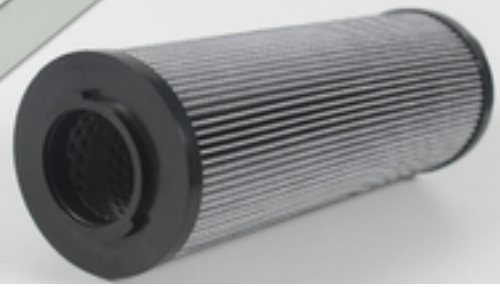
HYDRAULIC SUCTION FILTER ELEMENTS / STRAINERS

Suction Filter Elements and strainers protect pumps from contamination, while also providing additional flow diffusion in the suction line. They can be equipped with a magnetic column for retaining ferrous particles smaller than the pleated wire mesh, and with or without a bypass valve. Available versions:

- Suction Strainer, a simple filter element screwed onto the suction pipe and externally mounted through tank wall.
- Tank wall-mounted hydraulic suction filter element incorporate an anti-drain shut-off valve to allow element changes without draining the tank.

->

Return Line Filter Elements



Hydraulic Return line Filter Element

Return line filter are popular in hydraulic systems because they are a reliable & cost-effective way of filtering contamination from the operating fluid which flows back to the tank from the hydraulic system.

SINFT Hydraulic Oil Return Filter Element

Complete range of replacement filter elements for hydraulic return-line filters from SINFT and other OEMs such as Argo Hytos, Eppensteiner/Bosch Rexroth, Fairey Arlon/Parker, Hydac, Internormen/Eaton, Mahle/Filtration Group, Pall – with the same quality, function and installation as the respective original products. Stainless steel nonwoven and wire mesh, polyester nonwoven, filter paper, fibreglass nonwoven and other filter materials in all grades. High dirt absorption capacity. Long service life. Low maintenance effort. Find the part number you need.



SINFT® return filter part made for hydraulic system. They are suitable for operating pressures up to 25 bar and are placed as working filters and the last element in the hydraulic circuit directly upstream or downstream of the hydraulic tank. There, they clean the entire returning hydraulic fluid before this is fed back into the tank. SINFT provides aluminium, plastic or steel for line installation or tank mounting are often the only protection for a hydraulic system. The same Return line filter element products as the original model and provides customized shell.

Spin-on filters offer ease of element change due to the fact the canister is mounted directly onto the filter head. Flow rates up to 300 l/min.

In-line filters are mounted before the reservoir where there is little or no space available to

mount directly onto the tank. Because they are externally mounted they can be fitted to take very large flows in industrial applications. Capacity can be up to hydraulic system need.



Typical micron ratings for return filters range from 2microns to 125 micron depending on the required cleanliness level of the fluid in the system.

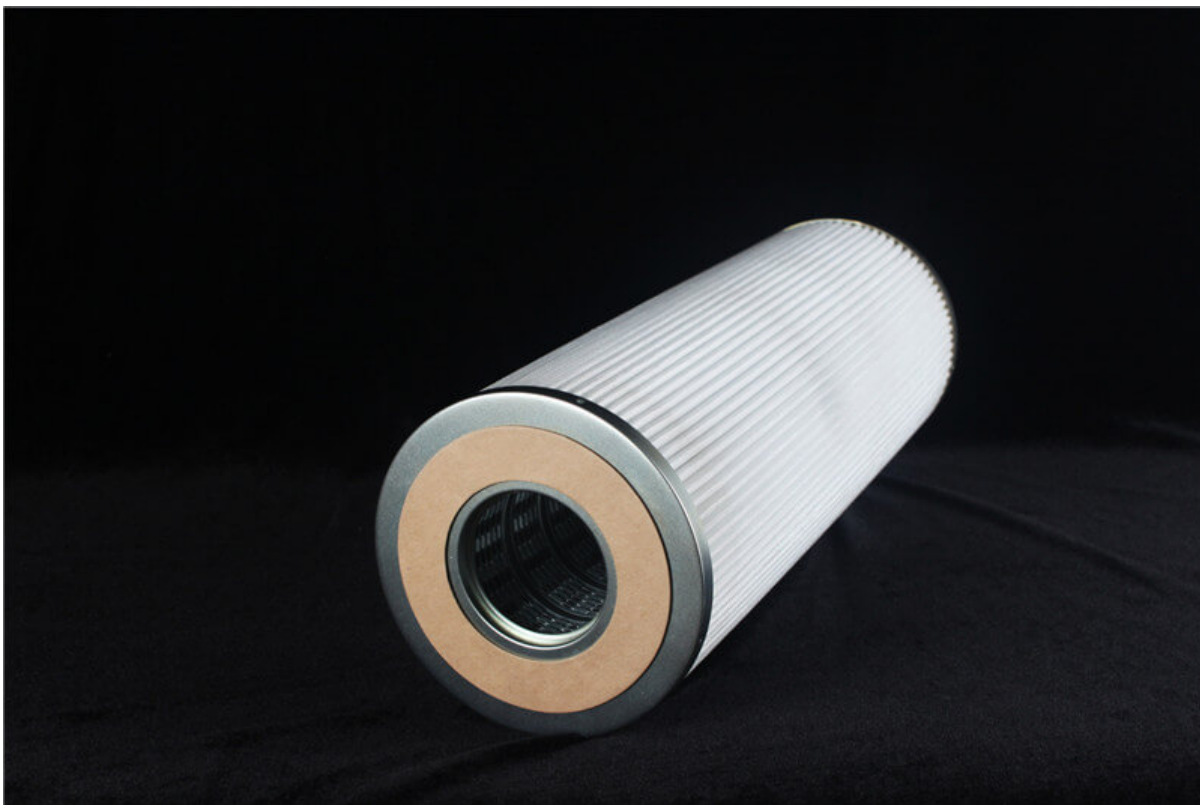
->

REPLACE HILCO-HILLIARD FILTER CARTRIDGES

Replacement Ph718-20-cn Hydraulic Filter Element

These durable cartridges stand up to continued use without softening and deterioration as a result of exposure to water. The key is an advanced synthetic media that provides maximum filtration with minimum pressure drop.

Applications: Engine and turbine lube, compressor lube and seal oil, cooling water, process water, and chemicals.



Specs

Media: Pleated Synthetic Filter

Size: 13 X 13 X 20

Nominal Filtration: 69 Micron

Physical Characteristics: Max Operating Temperature: 250°F

Collapse Strength: 100 PSID

Typical Applications: Engine and turbine lube, compressor lube and seal oil, cooling water, process water, and chemicals

Cross Reference Part Numbers:

Manufacturers:	Part Numbers:
FACET	FIS-718-75
HILLIARD	PH718-20-CP
HYCOA	C186-0200-B-1
HYCOA	S186-0200-B-1
HYPRO	HP102L18-70PB
NATIONAL	P718-0200-SH-1-1
REFILCO	PLH718-20FPB
ROYAL FILTER	RSLH-718-20

* All tradenames referenced are the trademarks, service marks or registered trademarks of their respective holders. Hebei Sinft Filter Co., Ltd. does not claim to produce other manufacturer's filters and/or strainer elements.

->

REPLACE HILCO-HILLIARD FILTER CARTRIDGES

Replace Hilco-Hilliard Hydraulic Filter Cartridges

These durable cartridges stand up to continued use without softening and deterioration as a result of exposure to water. The key is an advanced synthetic media that provides maximum filtration with minimum pressure drop.

Applications: Engine and turbine lube, compressor lube and seal oil, cooling water, process water, and chemicals.



Specs

Media: Pleated Synthetic Filter

Size: 13 X 13 X 20

Nominal Filtration: 2 Micron

Physical Characteristics: Max Operating Temperature: 250°F

Collapse Strength: 100 PSID

Typical Applications: Engine and turbine lube, compressor lube and seal oil, cooling water, process water, and chemicals

Cross Reference Part Numbers:

Manufacturers:	Part Numbers:
DONALDSON	P178729
FACET	FIS-718-0.5
FILTERSOFT	H7018MAABL
HYPRO	HP101L18-1MB
HYPRO	HP102L18-1MB
KAYDON	KM6018-02
MP	MP5400
PALL	HC0101FDZ18H
PALL	HC0101FKZ18H
PALL	HC0101FMZ18H
PALL	HC0101FUZ18H
PALL	HC2618FKZ18H
PALL	HC2618FMZ18H
SCHROEDER	SBF600018Z1B
SESCO	SESQH612A01618BFG

* All tradenames referenced are the trademarks, service marks or registered trademarks of their respective holders. Hebei Sinft Filter Co., Ltd. does not claim to produce other manufacturer's filters and/or strainer elements.

->

REPLACE HILCO-HILLIARD FILTER CARTRIDGES

Replacement PH718-14-CN hydraulic filter element

These durable cartridges stand up to continued use without softening and deterioration as a result of exposure to water. The key is an advanced synthetic media that provides maximum filtration with minimum pressure drop.

Applications: Engine and turbine lube, compressor lube and seal oil, cooling water, process water, and chemicals.



Specs

Media: Pleated Synthetic Filter

Size: 13 X 13 X 20

Nominal Filtration: 3 Micron

Physical Characteristics: Max Operating Temperature: 250°F

Collapse Strength: 100 PSID

Typical Applications: Engine and turbine lube, compressor lube and seal oil, cooling water, process water, and chemicals

Cross Reference Part Numbers:

Manufacturers:	Part Numbers:
DENISON	DE0101B5C03
FILTERSOFT	H7018MABL
HYDAC	7.01.18RO3BN2.625
HYDAC	H618-003BN-2.625
HYPRO	HP101L18-3MB

MP	MP5401
NUGENT	01-388-021
PALL	HC0101FDP18H
PALL	HC0101FKP18H
PALL	HC0101FMP18H
PALL	HC0101FUP18H
PALL	HC2618FKP18H
PALL	HC2618FMP18H
PTI	H83-150-CD-B
PTI	H83-150-GD-B
SCHROEDER	SBF600018Z3B
SESCO	SESQH612A03618BFG
VICKERS	V0101B5C03
WESTERN	E0101B5C03

* All tradenames referenced are the trademarks, service marks or registered trademarks of their respective holders. Hebei Sinft Filter Co., Ltd. does not claim to produce other manufacturer's filters and/or strainer elements.

->

REPLACE HILCO-HILLIARD FILTER CARTRIDGES

Replace PH718-12-CN hydraulic filter element

These durable cartridges stand up to continued use without softening and deterioration as a result of exposure to water. The key is an advanced synthetic media that provides maximum filtration with minimum pressure drop.

Applications: Engine and turbine lube, compressor lube and seal oil, cooling water, process water, and chemicals.



Specs

Media: Pleated Synthetic Filter

Size: 13 X 13 X 20

Nominal Filtration: 4 Micron

Physical Characteristics: Max Operating Temperature: 250°F

Collapse Strength: 100 PSID

Typical Applications: Engine and turbine lube, compressor lube and seal oil, cooling water, process water, and chemicals

Cross Reference Part Numbers:

Manufacturers:	Part Numbers:
BEHRINGER	BE101/18-03A
DENISON	DE0101B5C05
DONALDSON	P170102
FACET	FIS-718-3
FILTERSOFT	H7018MCBL
HILLIARD	PH718-12-CP

HYCOA	C186-0005-B-1
HYCOA	S186-0005-B-1
HYDAC	7.01.18R05BN2.625
HYDAC	H618-005BN-2.625
HYPRO	HP101L18-6MB
HYPRO	HP102L18-3MB
HYPRO	HP102L18-6MB
KAYDON	A910199
KAYDON	KM6018-05
MP	MP5402
NATIONAL	P718-0005-SH-1-1
NATIONAL	P718-0030-SH-1-1
NATIONAL	P718-0030-SH-1-7
NATIONAL	P718-0050-SH-1-1
PALL	HC0101FDN18H
PALL	HC0101FKN18H
PALL	HC0101FMN18H
PALL	HC0101FUN18H
PALL	HC2618FKN18H
PALL	HC2618FMN18H
PARKER	933912
PARKER	933912Q
PARKER	934179
PARKER	934179Q
PTI	H83-150-HD-B
REFILCO	PLH718-1/2FPB
ROYAL FILTER	RSLH-718-1/2
SCHROEDER	SBF600018Z5B
SESCO	SESQH612A06618BFG
VELCON	F0S-618PL1/2
VELCON	FOS-618PL1/2
VICKERS	V0101B5C05

* All tradenames referenced are the trademarks, service marks or registered trademarks of their respective holders. Hebei Sinft Filter Co., Ltd. does not claim to produce other manufacturer's filters and/or strainer elements.

->

REPLACE HILCO-HILLIARD FILTER CARTRIDGES

Replace PH718-11-CN Hydraulic Filter Element

These durable cartridges stand up to continued use without softening and deterioration as a result of exposure to water. The key is an advanced synthetic media that provides maximum filtration with minimum pressure drop.

Replace HILCO Applications: Engine and turbine lube, compressor lube and seal oil, cooling water, process water, and chemicals.



Specs

Media: Pleated Synthetic Filter

Size: 13 X 13 X 20

Nominal Filtration: 10 Micron

Physical Characteristics: Max Operating Temperature: 250°F

Collapse Strength: 100 PSID

Typical Applications: Engine and turbine lube, compressor lube and seal oil, cooling water, process water, and chemicals

Cross Reference Part Numbers:

Manufacturers:	Part Numbers:
DENISON	DE0101B5C10
FACET	FIS-718-10
FILTERSOFT	H7018MDBL
HYCOA	C186-0030-B-1
HYCOA	S186-0030-B-1

HYDAC	7.01.18R10BN2.625
HYPRO	HP101L18-12MB
KAYDON	KM6018-08
MP	MP5403
PALL	HC0101FDS18H
PALL	HC0101FKS18H
PALL	HC0101FMS18H
PALL	HC0101FUS18H
PALL	HC2618FKS18H
PALL	HC2618FMS18H
PTI	H83-150-KD-B
SCHROEDER	SBF600014Z10B
SCHROEDER	SBF600018Z10B
VELCON	FOS-618PLP8
VICKERS	V0101B5C10

* All tradenames referenced are the trademarks, service marks or registered trademarks of their respective holders. Hebei Sinft Filter Co., Ltd. does not claim to produce other manufacturer's filters and/or strainer elements.

->

REPLACE HILCO-HILLIARD FILTER CARTRIDGES

Replace Ph718-10-CN Hydraulic Filter Element

These durable cartridges stand up to continued use without softening and deterioration as a result of exposure to water. The key is an advanced synthetic media that provides maximum filtration with minimum pressure drop.

Applications: Engine and turbine lube, compressor lube and seal oil, cooling water, process water, and chemicals.



Specs

Media: Pleated Synthetic Filter

Size: 13 X 13 X 20

Nominal Filtration: 51 Micron

Physical Characteristics: Max Operating Temperature: 250°F

Collapse Strength: 100 PSID

Typical Applications: Engine and turbine lube, compressor lube and seal oil, cooling water, process water, and chemicals

Cross Reference Part Numbers:

Manufacturers:	Part Numbers:
BEHRINGER	BE101/18-25A
FACET	FIS-718-50
HILLIARD	PH718-10-CP
NATIONAL	P718-0100-SH-1-1
REFILCO	PLH718-10FPB
ROYAL FILTER	RSLH-718-10

* All tradenames referenced are the trademarks, service marks or registered trademarks of their respective holders. Hebei Sinft Filter Co., Ltd. does not claim to produce other manufacturer's filters and/or strainer elements.

->

REPLACE HILCO-HILLIARD FILTER CARTRIDGES

Replace Hilco Ph718-05-CN Filter Element

These durable cartridges stand up to continued use without softening and deterioration as a result of exposure to water. The key is an advanced synthetic media that provides maximum filtration with minimum pressure drop.

Applications: Engine and turbine lube, compressor lube and seal oil, cooling water, process water, and chemicals.



Specs

Media: Pleated Synthetic Filter

Size: 13 X 13 X 20

Nominal Filtration: 41 Micron

Physical Characteristics: Max Operating Temperature: 250°F

Collapse Strength: 100 PSID

Typical Applications: Engine and turbine lube, compressor lube and seal oil, cooling water, process water, and chemicals

Cross Reference Part Numbers:

Manufacturers:	Part Numbers:
B SPITZ	PLH718-5FPB
FACET	FIS-718-40
GENERAL ELECTRIC	342A2581-13
HILLIARD	PH718-05-CP
HYCOA	C186-0100-B-1

HYCOA	S186-0100-B-1
MP	MP3262
REFILCO	PLH718-5FPB
ROYAL FILTER	RSLH-718-5
VELCON	F0S-618PL05
VELCON	FOS-618PL05

* All tradenames referenced are the trademarks, service marks or registered trademarks of their respective holders. Hebei Sinft Filter Co., Ltd.does not claim to produce other manufacturer's filters and/or strainer elements.

->

REPLACE HILCO-HILLIARD FILTER CARTRIDGES

Replacement Hilco Ph718-03-CN Filter Cartridges

These durable cartridges stand up to continued use without softening and deterioration as a result of exposure to water. The key is an advanced synthetic media that provides maximum filtration with minimum pressure drop.

Applications: Engine and turbine lube, compressor lube and seal oil, cooling water, process water, and chemicals.



Specs

Media: Pleated Synthetic Filter

Size: 13 X 13 X 20

Nominal Filtration: 25 Micron

Physical Characteristics: Max Operating Temperature: 250°F

Collapse Strength: 100 PSID

Typical Applications: Engine and turbine lube, compressor lube and seal oil, cooling water, process water, and chemicals

Cross Reference Part Numbers:

Manufacturers:	Part Numbers:
BEHRINGER	BE101/18-12A
DENISON	DE0101B5C20
FACET	FIS-718-20
FILTERSOFT	H7018MFBL
HILLIARD	PH718-03-CP

HILLIARD	PH718-03-CS
HYCOA	C186-0050-B-1
HYCOA	S186-0050-B-1
HYDAC	7.01.18R25BN2.625
HYDAC	H618-010BN-2.625
HYPRO	HP102L18-25MB
KAYDON	A910244
KAYDON	KM6018-3
MP	MP5404
PALL	HC0101FDT18H
PALL	HC0101FKT18H
PALL	HC0101FMT18H
PALL	HC0101FUT18H
PALL	HC2618FKT18H
PALL	HC2618FMT18H
PARKER	933914
PARKER	933914Q
REFILCO	PLH718-3FPB
ROYAL FILTER	RSLH-718-3
SCHROEDER	SBF600018Z25B
SESCO	SESQH612A25618BFG

* All tradenames referenced are the trademarks, service marks or registered trademarks of their respective holders. Hebei Sinft Filter Co., Ltd. does not claim to produce other manufacturer's filters and/or strainer elements.

->

REPLACE HILCO-HILLIARD FILTER CARTRIDGES

Replace Hilco PH718-01-CN Filter Cartridges

These durable cartridges stand up to continued use without softening and deterioration as a result of exposure to water. The key is an advanced synthetic media that provides maximum filtration with minimum pressure drop.

Applications: Engine and turbine lube, compressor lube and seal oil, cooling water, process water, and chemicals.



Specs

Media: Pleated Synthetic Filter

Size: 13 X 13 X 20

Nominal Filtration: 15 Micron

Physical Characteristics: Max Operating Temperature: 250°F

Collapse Strength: 100 PSID

Typical Applications: Engine and turbine lube, compressor lube and seal oil, cooling water, process water, and chemicals

Cross Reference Part Numbers:

Manufacturers:	Part Numbers:
BEHRINGER	BE101/18-06A
FACET	FIS-718-15
GENERAL ELECTRIC	342A2581P019

HILLIARD	PH718-01-CP
HYPRO	HP102L18-12MB
KAYDON	KM6018-15
NATIONAL	P718-0010-SH-1-1
PARKER	933913
PARKER	933913Q
REFILCO	PLH718-1FPB
ROYAL FILTER	RSLH-718-1
SESCO	SESQH612A12618BFG
VELCON	F0S-618PLP8

* All tradenames referenced are the trademarks, service marks or registered trademarks of their respective holders. Hebei Sinft Filter Co., Ltd. does not claim to produce other manufacturer's filters and/or strainer elements.

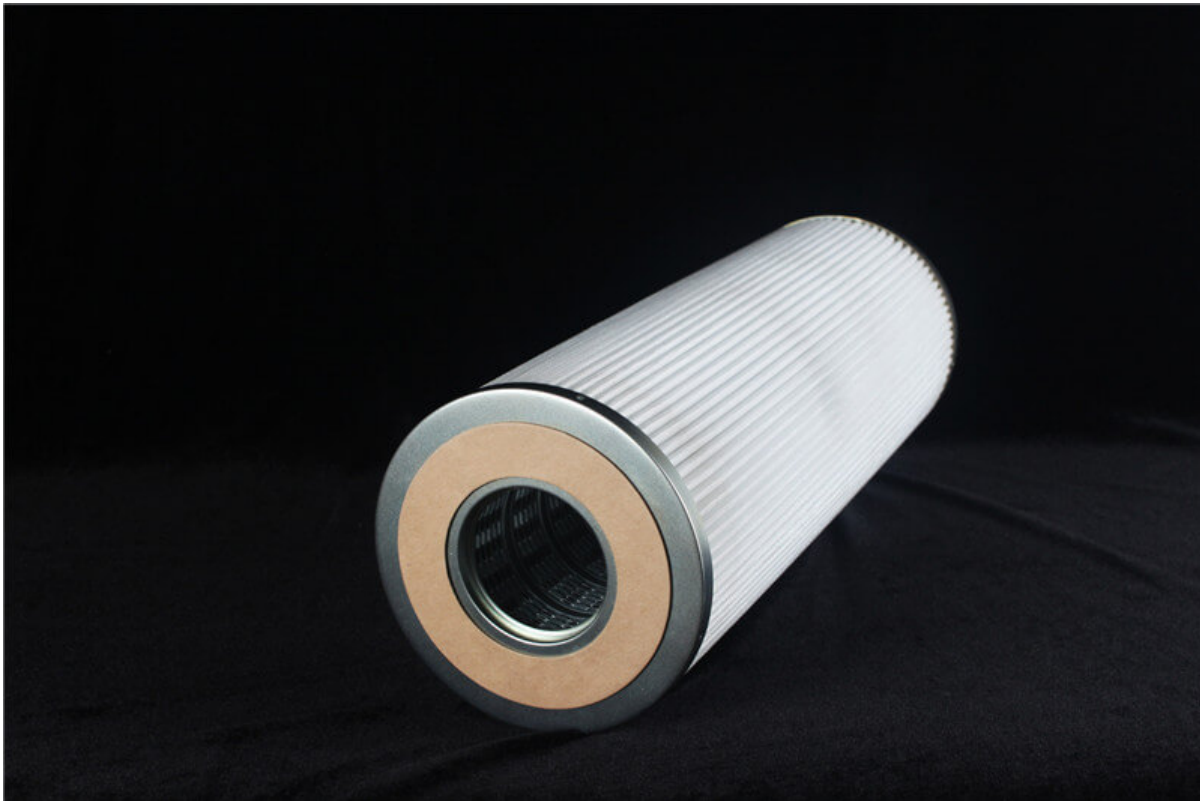
->

REPLACE HILCO-HILLIARD FILTER CARTRIDGES

Replace Hilco PH310-12-C Filter Element

These durable cartridges stand up to continued use without softening and deterioration as a result of exposure to water. The key is an advanced synthetic media that provides maximum filtration with minimum pressure drop.

Applications: Engine and turbine lube, compressor lube and seal oil, cooling water, process water, and chemicals.



Category: PH Synthetic Pleated Filters

* All tradenames referenced are the trademarks, service marks or registered trademarks of their respective holders. Hebei Sinft Filter Co., Ltd. does not claim to produce other manufacturer's filters and/or strainer elements.

->

По вопросам продаж и поддержки обращайтесь:

Алматы (7273)495-231	Казань (843)206-01-48	Новокузнецк (3843)20-46-81	Смоленск (4812)29-41-54
Архангельск (8182)63-90-72	Калининград (4012)72-03-81	Новосибирск (383)227-86-73	Сочи (862)225-72-31
Астрахань (8512)99-46-04	Калуга (4842)92-23-67	Омск (3812)21-46-40	Ставрополь (8652)20-65-13
Барнаул (3852)73-04-60	Кемерово (3842)65-04-62	Орел (4862)44-53-42	Сургут (3462)77-98-35
Белгород (4722)40-23-64	Киров (8332)68-02-04	Оренбург (3532)37-68-04	Тверь (4822)63-31-35
Брянск (4832)59-03-52	Краснодар (861)203-40-90	Пенза (8412)22-31-16	Томск (3822)98-41-53
Владивосток (423)249-28-31	Красноярск (391)204-63-61	Пермь (342)205-81-47	Тула (4872)74-02-29
Волгоград (844)278-03-48	Курск (4712)77-13-04	Ростов-на-Дону (863)308-18-15	Тюмень (3452)66-21-18
Вологда (8172)26-41-59	Липецк (4742)52-20-81	Рязань (4912)46-61-64	Ульяновск (8422)24-23-59
Воронеж (473)204-51-73	Магнитогорск (3519)55-03-13	Самара (846)206-03-16	Уфа (347)229-48-12
Екатеринбург (343)384-55-89	Москва (495)268-04-70	Санкт-Петербург (812)309-46-40	Хабаровск (4212)92-98-04
Иваново (4932)77-34-06	Мурманск (8152)59-64-93	Саратов (845)249-38-78	Челябинск (351)202-03-61
Ижевск (3412)26-03-58	Набережные Челны (8552)20-53-41	Севастополь (8692)22-31-93	Череповец (8202)49-02-64
Иркутск (395)279-98-46	Нижний Новгород (831)429-08-12	Симферополь (3652)67-13-56	Ярославль (4852)69-52-93
Россия (495)268-04-70	Киргизия (996)312-96-26-47	Казахстан (7172)727-132	